



## WHAT TO DO IN AN

# Emergency at MOD Longtown

This guide has been prepared for distribution to everyone living within the hazard area of the Longtown site.

### Emergency Information

Listen to local radio

Monitor social media platforms

[cumberland.gov.uk](http://cumberland.gov.uk)

March 2025

It is important that you study this booklet carefully and keep it in a safe and prominent place

## Introduction

- The MOD Longtown site stores conventional munitions in a large number of storehouses. The site has been in operation as a Storage Depot since 1938, during which time there has never been an accident resulting in an injury to members of the public or an environmental incident that has resulted in damage to the environment.
- The hazard area associated with the site is determined by the amount and nature of explosives stored. Research has shown that areas up to 2km from the centre of the site could be affected following an incident. Please refer to the map on page 5 for further details. The facilities at MOD Longtown present a possible but extremely unlikely risk to the general public and surrounding property. MOD Longtown's emergency procedures are regularly assessed by Defence Equipment and Support.
- The Ministry of Defence has a legal responsibility for ensuring that its ammunition and explosives are stored, processed and transported with the minimum risk to life and property. The storage of ammunition and explosives is subject to a strict licensing regime based on very specific regulations which prescribe safety standards approved by the Secretary of State for Defence and embody National EU and United Nations legislation. These regulations also require the preparation of On and Off Site Emergency Plans and the production of this booklet.
- This booklet replaces the similar blue leaflet issued in 2019.

Please read this booklet and keep it in a safe place.

# Your first actions

For use in the event of a serious emergency at the Longtown Site.

If you receive warning of a serious emergency or hear the Site Emergency Siren, remain calm and follow this advice:



1. Go indoors and stay there.



2. Close all doors and windows.



3. Listen to local radio. BBC Radio Cumbria on 95.6MHz, 397m (756kHz).



4. Do not use telephones (unless you need urgent help).



5. Do not attempt to leave the area.



6. Follow emergency services advice.



7. End of Emergency (await confirmation from local radio or the emergency services that the emergency situation has ended).

For additional information see over.

**GO IN, STAY IN, TUNE IN**

# Your first actions

## Site Emergency Siren

The Emergency Siren is sounded if any emergency occurs which could affect the safety of people **on the site**. However, if you hear the siren, as a precautionary measure, you should go indoors and follow the advice on page 2. The site siren is tested every Wednesday at 9.30 am, if you hear the siren at this time no action needs to be taken.

## Go Indoors And Stay There

In an emergency the best thing to do is to go indoors.

## Close Doors And Windows

If you take care to close all doors and windows, you can greatly reduce any effect from smoke entering your home. Switch off fans and heating systems, close ventilators and put out open fires.

## Try Not To Use The Telephone

In an emergency, telephone systems may become overloaded and this may prevent emergency calls getting through. If you must make a call be brief or send a text message. Where possible, please do not make mobile phone calls.

## Tune Into Your Local Radio Station

BBC Radio Cumbria on 95.6MHz. During an incident, emergency information and advice will be broadcast on local radio.

## Do Not Attempt To Leave The Area

NEVER be tempted to leave the area unless the Police have issued instructions to do so. You will be much safer indoors. If you are outside, you are more likely to be affected by smoke and if you try to leave you may block the roads for the emergency services.

# What could happen?

## Explosion

If an explosion occurred, windows could be shattered, and the main dangers would be from flying debris and glass.

## Smoke

If an explosion occurred, it is likely that any areas downwind of the site would be affected. The smoke is unlikely to be a serious hazard.

## Environmental Effects

It is considered unlikely that a major incident at the site could have a significant effect on the environment.

However short-term effects may require access restrictions to be put in place whilst evaluation and remediation measures are carried out. The hazard area includes part of the River Esk which flows into the Solway Firth. The River Esk is an important river for migratory fish and the Solway Firth carries national and international conservation designations.

Further information on what to do if an accident occurs is given in the next three pages.

## What you may need to do

The Police may ask you either to:

**Shelter** in your own home, or in the nearest building, if you are in the open.

Or to:

**Evacuate** (Only if told to do so) to a **reception centre**. See page 5 for step by step advice about what to do.

### At the end of the Emergency

Information concerning the end of the emergency will be broadcast on local radio and television. See page 5 for more details.

## Shelter

- Close all doors and windows. Close curtains and blinds and shelter in a room on the opposite side of the building to the site. Keep away from windows to avoid any danger from flying glass, and under no circumstances go outside where you could be in danger of being caught in an explosion.
- If possible quickly check your neighbours have been warned and then go indoors and stay there.
- If your children are at school during an emergency you will naturally want to collect them as soon as possible, however it may not be safe to do so. They will be looked after as a priority group either at the school or evacuated to a safe place where they will be looked after by school staff and those responding to the emergency. Please listen to local radio for advice and details of the arrangements that have been made.
- Stay tuned to your local radio station, for example: BBC Radio Cumbria on 95.6 MHz, 397m (756kHz).

Information will also be communicated via;

**X** - @CumberlandCoun

**Facebook** - Cumberland Council

- You will be told by the Police on local radio when it is safe to go outside again.

## Evacuate

- If the Police advise you to evacuate from the area, they will direct you to a Reception Centre, such as a local school, where you can stay until the emergency is over. The Police will tell you where the Reception Centre is. The local radio will carry this information.
- Use your own transport if possible and go directly to the Reception Centre. If travelling by car, keep all windows closed and turn off the heater and ventilation.
- Check your next door neighbours have been warned. If you know of anyone who is elderly or infirm and who might have difficulty during the evacuation, please help them. If you are unable to help, tell the Police about them.
- If you have space in your vehicle, please take any neighbours who don't have their own transport.
- If you do not have transport, the Police may ask you to walk to an Assembly Point from where a bus will take you to a Reception Centre.
- Do not delay except to gather essential medicines. If your children are at school during an emergency you will naturally want to collect them as soon as possible, however it may not be safe to do so. They will be looked after as a priority group either at the school or evacuated to a safe place where they will be looked after by school staff and those responding to the emergency. Please listen to local radio for advice and details of the arrangements that have been made.
- If you wish to stay with friends or relatives elsewhere you will of course be free to do so. However, it is VITAL that you register at the Reception Centre first, so that if someone asks the Police about you, they will be able to say that you are safe.
- If you bring pets to the Reception Centre in a car, leave them in the car but do not fully close all the windows. Alternatively, temporary arrangements will be made for them.
- Re-entry to any evacuated sectors during the emergency will normally be restricted by the Police to persons having compelling reasons for doing so. Arrangements could be made, for example, for essential feeding of livestock.

## END OF THE EMERGENCY

Information concerning the end of the emergency will be broadcast on BBC Radio Cumbria 95.6 MHz, 397m (756kHz).

## Further information

Further details concerning Longtown Emergency Arrangements can be obtained from:

### On Site arrangements

MOD Longtown

PO Box 1 | Longtown | Carlisle | Cumbria | CA6 5LX

### Off Site arrangements

#### Resilience Manager

Resilience Manager, Joint Emergency Management and Resilience Team

Westmorland and Furness Council\*

Fire & Rescue Service HQ | Carleton Avenue | Penrith, CA10 2FA

Telephone: **01768 812500**

Email: [emergency.planning@westmorlandandfurness.gov.uk](mailto:emergency.planning@westmorlandandfurness.gov.uk)

### Regulatory Matters

#### Health and Safety Executive

Redgrave Court | Merton Road | Bootle | L20 7HS

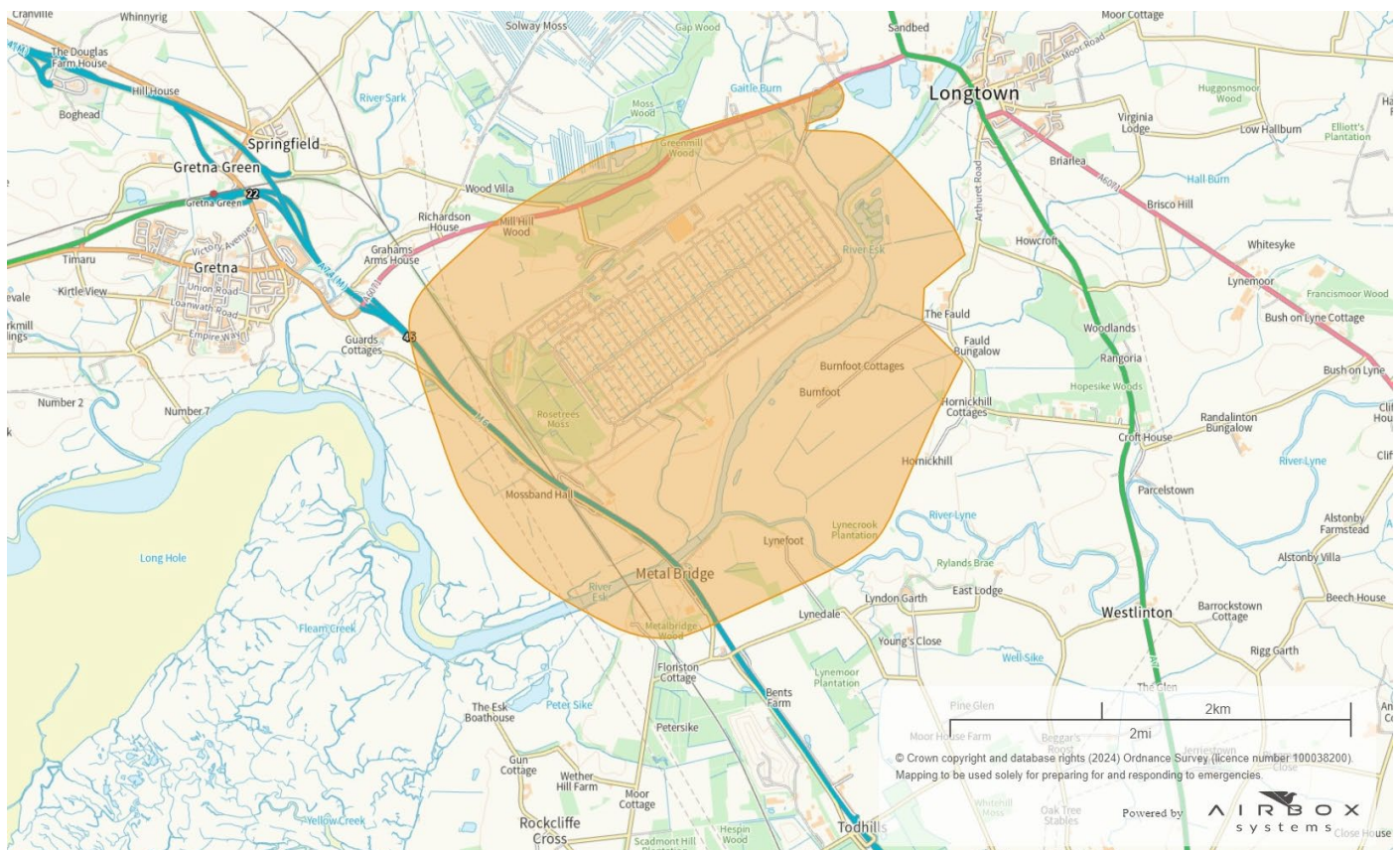
[www.hse.gov.uk](http://www.hse.gov.uk)

**0345 300 9923**

This publication can be provided in alternative formats on request. Please contact MOD Longtown at the address above.

\* The Joint Emergency Management and Resilience Team covers Cumberland Council and Westmorland and Furness Council.

## Hazard area





If you require this document in another format (eg CD, audio cassette, Braille or large type) or in another language, please telephone 01768 812500

আপনি যদি এই তথ্য আপনার নিজের ভাষায় পেতে চান তাহলে অনুগ্রহ করে 01768 812500 নম্বরে টেলিফোন করুন।

如果您希望通过母语了解此信息，  
请致电01768 812500

**Jeigu norétumėte gauti šią informaciją savo kalba,  
skambinkite telefonu 01768 812500**

**W celu uzyskania informacji w Państwa języku proszę  
zatelefonować pod numer 01768 812500**

**Se quiser aceder a esta informação na sua língua,  
telefone para o 01768 812500**

**Bu bilgiyi kendi dilinizde görmek istiyorsanız lütfen  
01768 812500 numaralı telefonu arayınız**